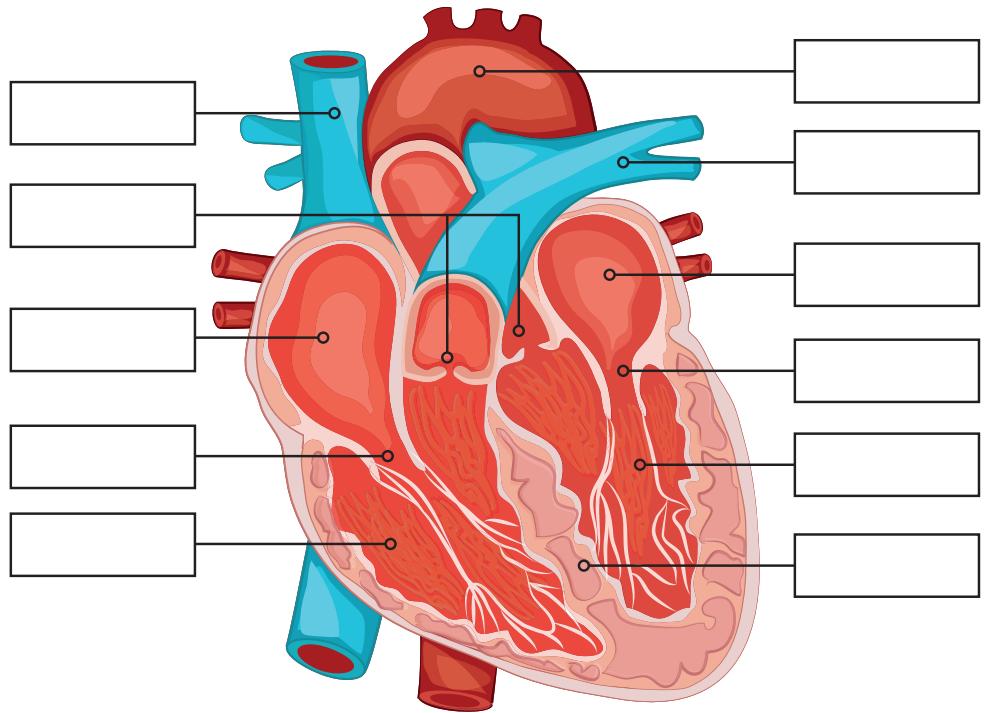
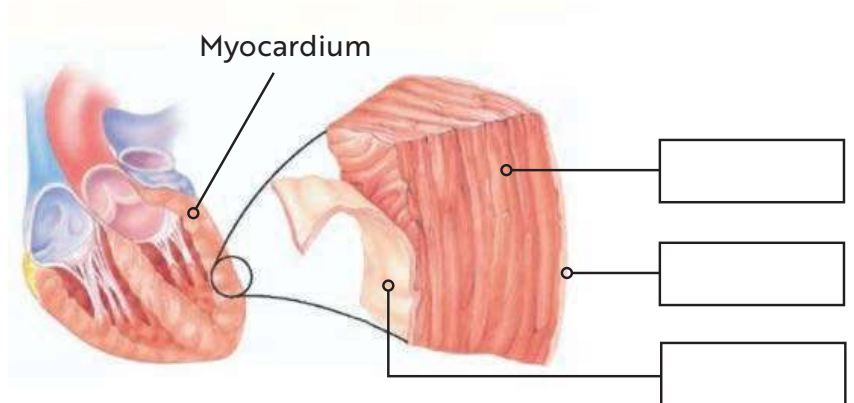


♥ Highlight the direction of blood flow, the valves, and fill in the blanks with the correct name:

- Pulmonary Artery
- Aorta
- Left Atrium
- Left Ventricle
- Ventricular Septum
- Right Ventricle
- Right Atrium
- Superior Vena Cava
- Mitral Valve
- Tricuspid Valve
- Semilunar Valves  
(Aortic and Pulmonary Valves)
- Myocardium
- Epicardium
- Endocardium



Note: left and right, refers to the left and right of your heart, not of the picture.



♥ Observe and describe the differences between the different animal hearts displayed and a human heart: